

1 — 2  
THROUGH  
64

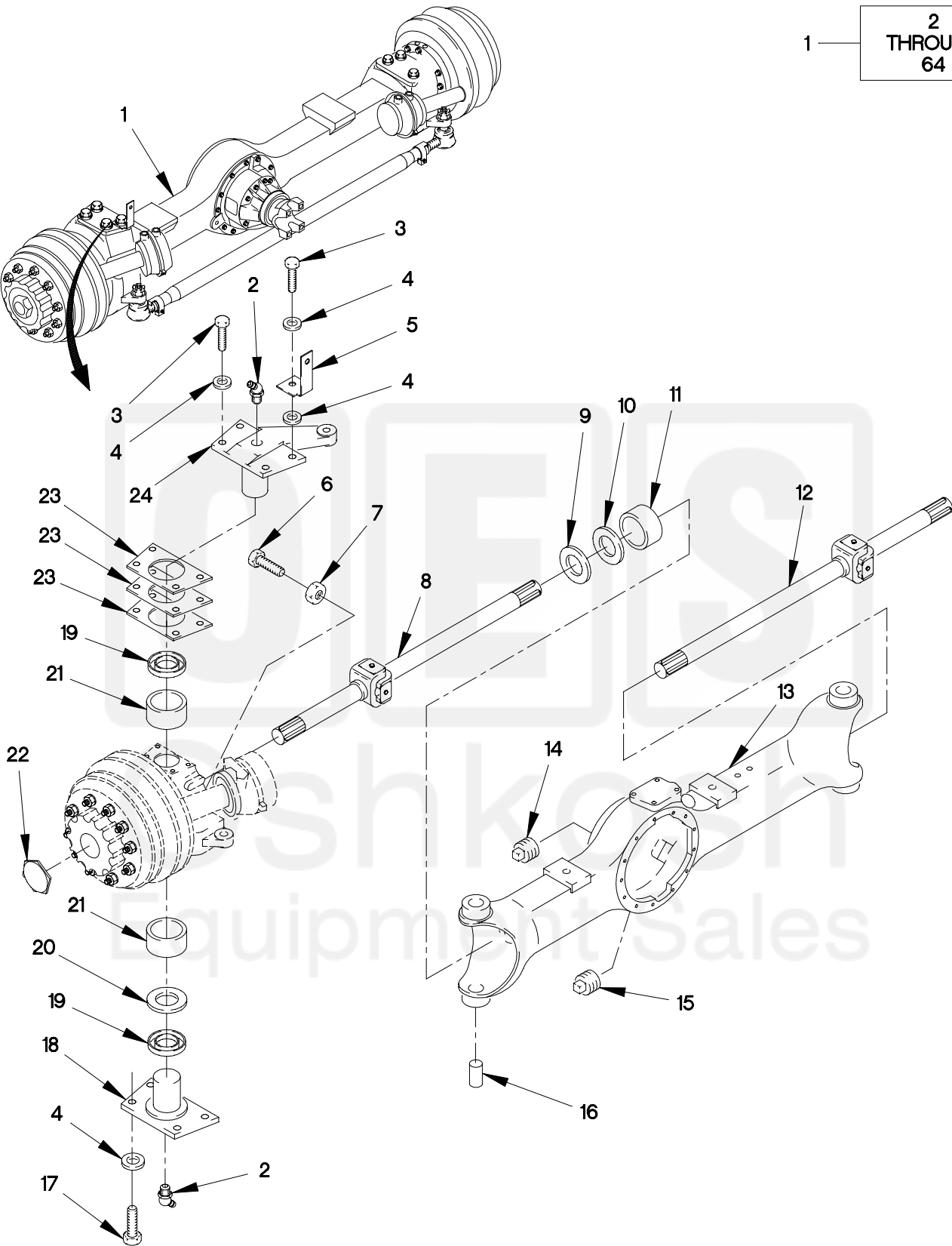
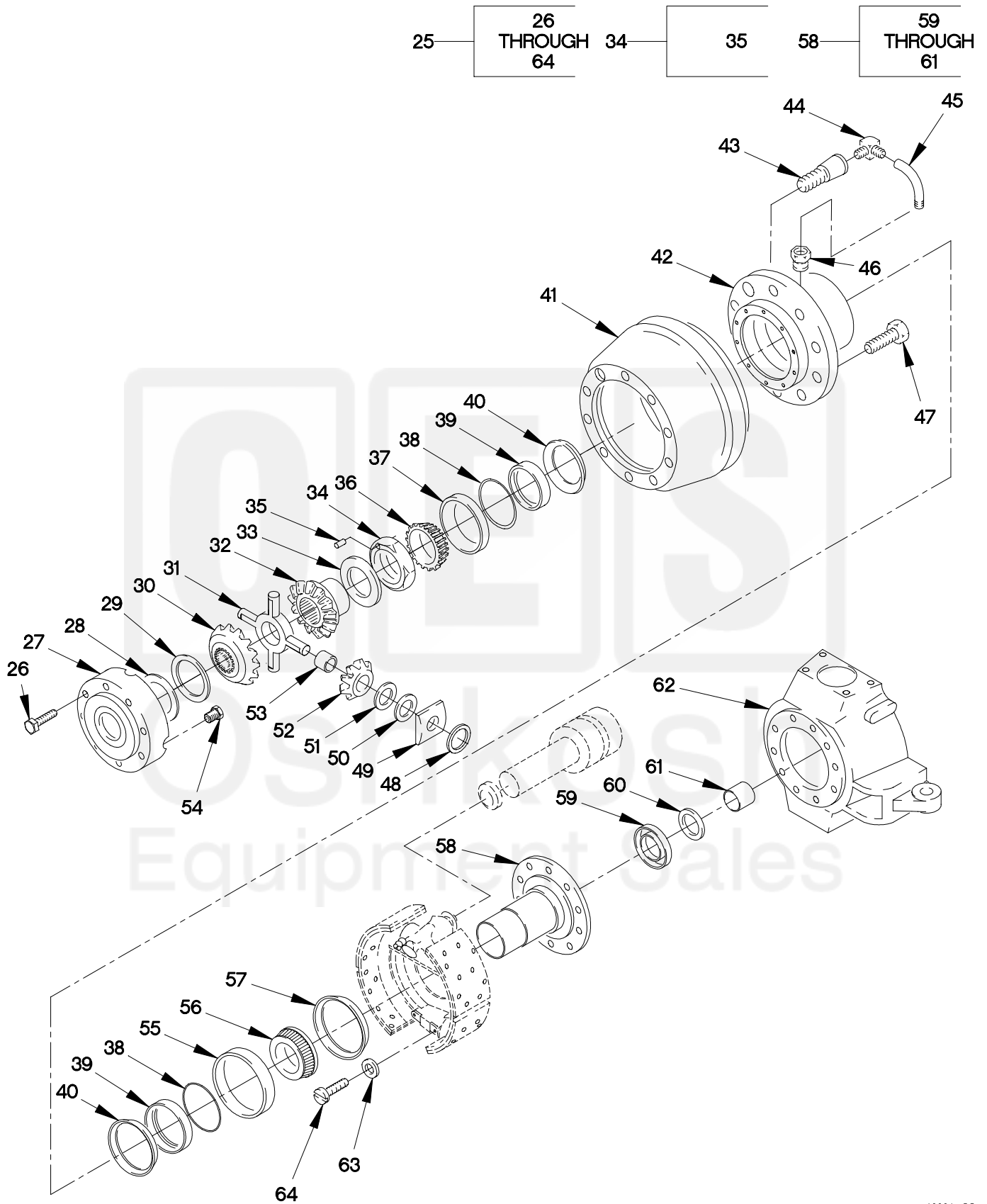


FIGURE 132. FRONT AXLE AND WHEEL END ASSEMBLY (SHEET 1 OF 2)

1000A-1C



1000A-2C

FIGURE 132. FRONT AXLE AND WHEEL END ASSEMBLY (SHEET 2 OF 2)

SECTION II

TM 9-2320-365-24P

(1) ITEM NO	(2) SMR CODE	(3) CAGEC	(4) PART NUMBER	(5) DESCRIPTION AND USABLE ON CODE (UOC)	(6) QTY
GROUP 1000: FRONT AXLE ASSEMBLY FIG.132 FRONT AXLE AND WHEEL END ASSEMBLY					
1	PRFHH	19207	12421816	AXLE ASSEMBLY,AUTO.....	1
2	PAFZZ	78500	1199-B-3226	.FITTING,LUBRICATION PART OF KIT P/N KIT4706.....	4
3	PAFZZ	78500	S-21418-A-2	.SCREW,CAP,HEXAGON H PART OF KIT P/N KIT4706.....	4
4	PAFZZ	78500	1229-M-1625	.WASHER,FLAT PART OF KIT P/N KIT4706.....	18
5	PAFZZ	19207	12420331	.BRACKET,ANGLE.....	2
6	PAFZZ	78500	26X1024	.SCREW,CAP,HEXAGON H.....	2
7	PAFZZ	96906	MS51967-17	.NUT,PLAIN,HEXAGON 9/16-12.....	2
8	PAFZZ	78500	A2-3202-A-9621	.UNIVERSAL JOINT,VEH.....	1
9	PAFZZ	78500	A-1205-D-2344	.SEAL,PLAIN ENCASED.....	2
10	PAFZZ	78500	1229-T-4570	.BEARING,WASHER,THRU.....	2
11	PAFZZ	78500	1225K817	.BUSHING,SLEEVE.....	2
12	PAFZZ	78500	A3-3202-A-9621	.UNIVERSAL JOINT,VEH.....	1
13	XAFZZ	78500	C23201Q7895XA	.HOUSING,MECHANICAL.....	1
14	PAOZZ	81348	WW-P-471ACBBUE	.PLUG,PIPE FILL PLUG.....	1
15	PAOZZ	78500	1250-E-473	.PLUG,MACHINE THREAD DRAIN PLUG....	1
16	PAFZZ	78500	1246-E-655	.PIN,STRAIGHT,HEADLE PART OF KIT P/N KIT4706.....	2
17	PAFZZ	78500	S-21416-A-2	.SCREW,CAP,SOCKET HE PART OF KIT P/N KIT4706.....	12
18	PAFZZ	78500	3262W1219	.COVER,ACCESS.....	3
19	PAFZZ	78500	1205F2164	.SEAL,NONMETALLIC RO PART OF KIT P/N KIT4706.....	4
20	PAFZZ	78500	1229K4119	.BEARING,WASHER,THRU PART OF KIT P/N KIT4706.....	2
21	PAFZZ	78500	1225K1259	.BEARING,WASHER,THRU.....	2
22	PAOZZ	78500	1250T1086	.CAP,GREASE.....	2
23	PAFZZ	78500	2203Q9845	.SHIM .003 IN (.076MM) PART OF KIT P/N KIT4706.....	1
23	PAFZZ	78500	2203R9846	.SHIM .005 IN (.127MM).....	1
23	PAFZZ	78500	2203S9847	.SHIM .010 IN (.254MM).....	1
24	PAFZZ	78500	3133B7178	.ARM,PIVOTING WHEEL.....	1
25	AFFFF	78500	A3333J4118	.WHEEL END ASSY LEFT HAND SIDE.....	1
25	AFFFF	78500	A4333J4118	.WHEEL END ASSY RIGHT HAND SIDE....	1
26	PAOZZ	78500	10X1563	..SCREW,CAP,HEXAGON H.....	12
27	PAOZZ	78500	3266-A-1275	..COVER,ACCESS.....	1
28	PAOZZ	78500	1229A4161	..BEARING,WASHER,THRU.....	1
29	PAOZZ	78500	1228J1154	..BEARING,WASHER,THRU.....	1

SECTION II

TM 9-2320-365-24P

(1) ITEM NO	(2) SMR CODE	(3) CAGEC	(4) PART NUMBER	(5) DESCRIPTION AND USABLE ON CODE (UOC)	(6) QTY
30	PAOZZ	78500	2234F1202	..GEAR,BEVEL.....	1
31	KFOZZ	78500	3278Z1118	..SPIDER,DIFFERENTIAL.....	1
32	PAOZZ	78500	2234E1201	..GEAR,BEVEL.....	1
33	KFOZZ	78500	2203J9500	..SHIM .012IN (.30MM).....	V
33	KFOZZ	78500	2203K9501	..SHIM .015IN (.38MM).....	V
33	KFOZZ	78500	2203L9502	..SHIM .020IN (.51MM).....	V
33	KFOZZ	78500	2203M9503	..SHIM .025IN (.64MM).....	V
33	KFOZZ	78500	2203N9504	..SHIM .031IN (.79MM).....	V
34	PAOZZ	78500	A1227X1480	..RETAINER,PACKING (WHEEL BEARING NUT) PIN (19X1067) INCLUDED IN THIS ASSEMBLY.....	1
35	XA	78500	19X1067	..PIN,STRAIGHT,HEADLE SOLD AS PART OF A1227X1480 ONLY.....	2
36	PAOZZ	60038	47686	..CONE AND ROLLERS,TA.....	1
37	PAOZZ	61220	47620	..CUP,TAPERED ROLLER.....	1
38	PAOZZ	78500	1229K3131	..RING,RETAINING.....	2
39	PAOZZ	78500	2297R6648	..SEAL,PLAIN.....	2
40	PAOZZ	78500	A-1205-Q-2435	..SEAL ASSY,CTIS.....	2
41	PAOZZ	78500	3219-W-4833	..BRAKE DRUM.....	1
42	KFOZZ	78500	A-333-A-4317	..HUB,WHEEL END ASSY.....	1
43	PAOZZ	78500	20X2123	..SCREW,MACHINE LEFT HAND.....	1
43	PAOZZ	78500	20X2122	..SCREW,MACHINE RIGHT HAND.....	1
44	PAOZZ	78500	2206D1018	..ELBOW,BOSS.....	1
45	PAOZZ	78500	A-3196-X-1194	..TUBE ASSEMBLY,METAL.....	1
46	PAOZZ	78500	2297P3838	..SEAT,TUBE.....	1
47	PAOZZ	78500	20X1577	..BOLT,FIREBRICK ANCH LEFT SIDE....	9
47	PAOZZ	78500	20X1578	..BOLT,FINNED NECK RIGHT SIDE.....	9
48	PAOZZ	78500	5-X-1155	..O-RING.....	4
49	PAOZZ	78500	1229W4157	..BEARING,WASHER,THRU.....	4
50	PAOZZ	78500	1228K1155	..BEARING,WASHER,THRU.....	4
51	PAOZZ	78500	1229Z4160	..BEARING,WASHER,THRU.....	4
52	PAOZZ	78500	2233J1102	..GEAR,BEVEL.....	4
53	PAOZZ	78500	1228H1152	..BEARING,WASHER,THRU.....	4
54	PAOZZ	78500	1850T 124	..PLUG,PIPE,MAGNETIC.....	1
55	PAOZZ	60038	JM716610	..CUP,TAPERED ROLLER.....	1
56	PAOZZ	60038	JM716649	..CONE AND ROLLERS,TA.....	1
57	PAOZZ	78500	A-1205-R-2254	..SEAL,PLAIN ENCASED.....	1
58	PAOOO	78500	A-3213-P-1758	..SPINDLE,MECHANICALL.....	1
59	PAFZZ	78500	A-1205-D-2344	..SEAL,PLAIN ENCASED.....	1
60	PAFZZ	78500	1229-T-4570	..BEARING,WASHER,THRU.....	1
61	PAFZZ	78500	1225K817	..BUSHING,SLEEVE.....	1
62	PAOZZ	78500	3111D3254	..SPINDLE,WHEEL,DRIVI.....	1
62	PAOZZ	78500	3111E3255	..SPINDLE,WHEEL,DRIVI.....	1
63	PAFZZ	78500	1229-Y-1507	..WASHER,FLAT.....	10

(1) ITEM NO	(2) SMR CODE	(3) CAGEC	(4) PART NUMBER	(5) DESCRIPTION AND USABLE ON CODE (UOC)	(6) QTY
64	PAFZZ	78500	S2922A2	..SCREW,CAP,HEXAGON H.....	10

END OF FIGURE

